





Cook & Hold | Smoker Oven Accessories

Featuring game changing Halo Heat® technology, Cook & Hold Ovens are designed to produce better food quality and higher yields. Gentle, radiant heat evenly surrounds food without the use of extremely hot elements, added humidity or fans. Known as one of the most versatile and energy efficient pieces of equipment in the industry, these ovens are engineered to maximize return on investment. Further your investment with a number of accessories that enhance cooking, ease of cleaning and more for foodservice operations.

Cleaning

Protect your investment with regular cleaning. From sprays to tablets to brushes, we have what you need to properly care for your equipment, ensure high-quality cooking results, keep employees safe and extend equipment lifetime.



Non-Caustic Oven Cleaner

[Part #CE-46828]

PRODUCT DIMENSIONS

Refer to Liquid Spec Sheet

COOK & HOLD MODELS

300-TH, 500-TH, 500-TH II, 750-TH, 750-TH II, 1000-TH, 1000-TH I, 1000-TH II, 1200-TH

SMOKER MODELS

767-SK, 767-SK III, 750-SK, 1000-SK I, 1000-SKIII, 1000-SK, 1200-SK III, 1750-SK, 1767-SK, 1767 SK III



Non-Caustic Oven Cleaner [case of six 6]

[Part #CE-46829]

PRODUCT DIMENSIONS

Refer to Liquid Spec Sheet

COOK & HOLD MODELS

300-TH, 500-TH, 500-TH II, 750-TH, 750-TH II, 1000-TH, 1000-TH I, 1000-TH II, 1200-TH, 1750-TH

SMOKER MODELS

767-SK, 767-SK III, 750-SK, 1000-SK I, 1000-SKIII, 1000-SK, 1200-SK III, 1750-SK, 1767-SK, 1767 SK III

Cooking Accessories

Seamlessly execute your menu and introduce new menu items with a variety of cooking accessories. We offer a number of pans, racks, probes and more to help you achieve the menu versatility your customers are looking for.

Carving Holders

Carving holders hold a variety of large cuts of meat in place for high-quality cooking, carving and service to customers.



Steamship Cafeteria Round Holder

CLASSIC COOK & HOLD

[Part #4459]

500-TH II, 750-TH II, 1000-TH II, 1000-TH I

PRODUCT DIMENSIONS

12-3/4" x 20-3/4" x 3-1/4"
[323 x 527 x 81]

NEW COOK & HOLD | SMOKER

[Part #4459]

500-TH II, 750-TH, 750-SK, 1000-TH, 1000-SK, 1200-TH, 1200-SK, 1750-TH, 1750-SK

PRODUCT DIMENSIONS

12-3/4" x 20-3/4" x 3-1/4"
[323 x 527 x 81]



Prime Rib Holder

CLASSIC COOK & HOLD | SMOKER

[Part #HL-2635]

500-TH II, 750-TH II, 1000-TH I, 1000-TH II

PRODUCT DIMENSIONS

9" x 11-7/8" x 7"
[228 x 301 x 176]

NEW COOK & HOLD | SMOKER

[Part #HL-2635]

300-TH, 500-TH, 750-TH, 750-SK, 1000-TH, 1000-SK, 1200-TH, 1200-SK, 1750-TH, 1750-SK

PRODUCT DIMENSIONS

9" x 11-7/8" x 7"
[228 x 301 x 176]



Pans

Pans are available in a variety of sizes and configurations to collect grease and drippings during the cooking process.



Drip Pan without Drain

NEW COOK & HOLD

[Part #PN-37119]
300-TH

PRODUCT DIMENSIONS

12-4/5" x 20-3/8" x 3/4" [323 x 527 x 31]



Drip Pan with Drain

CLASSIC COOK & HOLD

[Part #14813]
500-TH II

PRODUCT DIMENSIONS

13-7/8" x 21-1/8" x 1-1/2" [352 x 536 x 380]

NEW COOK & HOLD

[Part #5027714]
500-TH

PRODUCT DIMENSIONS

11" x 21-3/8" x 2-3/8" [281 x 542 x 60]



Drip Pan with Drain

CLASSIC COOK & HOLD | SMOKER

[Part #14831]
750-TH II, 767-SK, 1767-SK

PRODUCT DIMENSIONS

21-3/4" x 26" x 1-5/8" [552 x 660 x 41]

NEW COOK & HOLD | SMOKER

[Part #5027713]
750-TH, 750-SK, 1750-TH, 1750-SK

PRODUCT DIMENSIONS

18-1/2" x 26-3/8" x 2-3/8" [472 x 670 x 60]



Drip Pan with Drain

CLASSIC COOK & HOLD | SMOKER

[Part #5005616]
1000-TH II, 1000-TH I, 1000-SK I, 1000-SK II

PRODUCT DIMENSIONS

18-1/4" x 24-1/5" x 2" [463 x 614 x 49]

NEW COOK & HOLD | SMOKER

[Part #502589]
1000-TH, 1200-TH, 1000-SK, 1200-SK

PRODUCT DIMENSIONS

15-1/2" x 26-3/8" x 2-3/8" [345 x 670 x 60]



Drip Pan without Drain

CLASSIC COOK & HOLD | SMOKER

[Part #11906]
1000-TH II, 1000-TH I, 1000-SK I, 1000-SK II

PRODUCT DIMENSIONS

18-1/2" x 26" x 1-7/8" [469 x 660 x 47]

NEW COOK & HOLD | SMOKER

[Part #1034371]
1000-TH, 1200-TH, 1000-SK, 1200-SK

PRODUCT DIMENSIONS

15-1/2" x 25-3/4" x 2" [469 x 660 x 50]



Drip Pan without Drain

CLASSIC COOK & HOLD

[Part #11898]
500-TH II

PRODUCT DIMENSIONS

13-3/4" x 21" x 1-1/2" [349 x 533 x 38]

NEW COOK & HOLD

[Part #1034369]
500-TH

PRODUCT DIMENSIONS

11" x 20-3/4" x 2" [354 x 527 x 50]



Drip Pan without Drain

CLASSIC COOK & HOLD | SMOKER

[Part #1014684]
750-TH II, 767-SK, 1767-SK

PRODUCT DIMENSIONS

21-5/8" x 25-7/8" x 2" [657 x 549 x 50]

NEW COOK & HOLD | SMOKER

[Part #1034370]
750-TH, 750-SK

PRODUCT DIMENSIONS

18-1/2" x 25-3/4" x 2" [472 x 654 x 50]



Protein Racks

Effortlessly roast proteins with racks for poultry, ribs & more.



6-piece Poultry Roasting Rack

CLASSIC COOK & HOLD
[Part #5003463]

500-TH II, 750-TH II, 1000-TH II, 1200-TH II

PRODUCT DIMENSIONS

12-3/4" x 21" x 6-1/4"
[323 x 533 x 158]

NEW COOK & HOLD
[Part #5003463]

500-TH, 750-TH, 1000-TH, 1200-TH, 1750-TH

PRODUCT DIMENSIONS

12-3/4" x 21" x 6-1/4"
[323 x 533 x 158]



6-piece Poultry Roasting Rack with drip guard

CLASSIC COOK & HOLD
[Part #PN-5020829]

500-TH II, 750-TH II, 1000-TH II, 1200-TH II

PRODUCT DIMENSIONS

12-3/4" x 21" x 6-1/4"
[323 x 533 x 158]

NEW COOK & HOLD
[Part #PN-5020829]

500-TH, 750-TH, 1000-TH, 1200-TH, 1750-TH

PRODUCT DIMENSIONS

12-3/4" x 21" x 6-1/4"
[323 x 533 x 158]



Shelf, Stainless Steel, Rib Rack

CLASSIC SMOKER
[Part #SH-2743]

767-SK, 1767-SK

PRODUCT DIMENSIONS

21" x 24-3/4" x 2-1/2"
[533 x 755 x 63]

NEW SMOKER
[Part #SH-2743]

750-SK, 1750-SK

PRODUCT DIMENSIONS

21" x 24-3/4" x 2-1/2"
[533 x 755 x 63]



Shelf, Stainless Steel, Rib Rack

CLASSIC SMOKER
[Part #SH-29474]

1000-SK/I, 1000-SK/II

PRODUCT DIMENSIONS

18" x 24-3/4" x 2"
[457 x 628 x 51]

NEW SMOKER
[Part #SH-29474]

1000-SK, 1200-SK

PRODUCT DIMENSIONS

18" x 24-3/4" x 2"
[457 x 628 x 51]



Shelf, Stainless Steel, Flat Wire

CLASSIC COOK & HOLD | SMOKER
[Part #SH-2324]

767-SK, 1767-SK, 750-TH/II

PRODUCT DIMENSIONS

21 1/16" x 24 3/4"

NEW COOK & HOLD | SMOKER
[Part #2324]

750-TH, 750-SK, 1750-TH, 1750-SK

PRODUCT DIMENSIONS

21 1/16" x 24 3/4"



Shelf, Stainless Steel, Flat Wire

CLASSIC COOK & HOLD | SMOKER
[Part #SH-2325]

1000-TH/I, 1000-TH/II, 1000-SK/I, 1000-SK/II

PRODUCT DIMENSIONS

17 15/16" x 24 3/4"

NEW COOK & HOLD | SMOKER
[Part #2325]

1000-TH, 1200-TH, 1000-SK, 1200-SK

PRODUCT DIMENSIONS

17 15/16" x 24 3/4"



Shelf, Stainless Steel, Flat Wire

CLASSIC COOK & HOLD
[Part #SH-2326]

500-TH II

PRODUCT DIMENSIONS

13-1/4" x 19-1/2"
[336 x 495]

NEW COOK & HOLD
[Part #SH-47163]

500-TH

PRODUCT DIMENSIONS

13-4/5" x 19-1/2"
[351 x 495]



Probes

Sous Vide probes have additional sensors to more accurately measure product temperature.



Probe, Sous Vide
[Part #PR-36576]

PRODUCT DIMENSIONS
1000 mm

NEW COOK & HOLD
300-TH, 500-TH, 750-TH, 1000-TH,
1200-TH, 1750-TH



Probe, Standard Straight
[Part #PR-46999]

PRODUCT DIMENSIONS
820 mm

SMOKER MODELS
750-SK, 1000-SK, 1200-SK, 1750-SK

COOK & HOLD MODELS
300-TH, 500-TH, 750-TH, 1000-TH,
1200-TH, 1750-TH



Probe, Standard T-Shape
[Part #PR-46998]

PRODUCT DIMENSIONS
820 mm

SMOKER MODELS
750-SK, 1000-SK, 1200-SK, 1750-SK

COOK & HOLD MODELS
300-TH, 500-TH, 750-TH, 1000-TH,
1200-TH, 1750-TH



Wood Chips [For Smoker Ovens Only]

Introduce bold flavor to your menu with real smoke from real wood chips available in a variety of flavors and package sizes.



Wood Chips - Sample Bag [Part #5026741]

PRODUCT DIMENSIONS
2 lb sample bags of all 4 types
[cherry, apply, sugar maple, & hickory]

SMOKER MODELS
767-SK, 1000-SK/I, 1000-SK/II, 1767-SK,
750-SK, 1000-SK, 1200-SK, 1750-SK



Wood Chips - Cherry [Part #WC-22541]

PRODUCT DIMENSIONS
1.25 cu.ft.

SMOKER MODELS
767-SK, 1000-SK/I, 1000-SK/II, 1767-SK,
750-SK, 1000-SK, 1200-SK, 1750-SK



Wood Chips - Apple [Part #WC-22543, #WC-37747]

PRODUCT DIMENSIONS
1.25 cu.ft. - [#WC-22543]
2.5 cu ft. - [#WC-37747]

SMOKER MODELS
767-SK, 1000-SK/I, 1000-SK/II, 1767-SK,
750-SK, 1000-SK, 1200-SK, 1750-SK



Wood Chips - Maple [Part #WC-22545]

PRODUCT DIMENSIONS
1.25 cu.ft.

SMOKER MODELS
767-SK, 1000-SK/I, 1000-SK/II, 1767-SK,
750-SK, 1000-SK, 1200-SK, 1750-SK



Wood Chips - Hickory [Part #WC-2829]

PRODUCT DIMENSIONS
1.25 cu.ft.

SMOKER MODELS
767-SK, 1000-SK/I, 1000-SK/II, 1767-SK,
750-SK, 1000-SK, 1200-SK, 1750-SK



Wood Chips - Cherry [Part #WC-37746]

PRODUCT DIMENSIONS
2.5 cu.ft.

SMOKER MODELS
767-SK, 1000-SK/I, 1000-SK/II, 1767-SK,
750-SK, 1000-SK, 1200-SK, 1750-SK



Wood Chips - Apple [Part #WC-37747]

PRODUCT DIMENSIONS
2.5 cu.ft.

SMOKER MODELS
767-SK, 1000-SK/I, 1000-SK/II, 1767-SK,
750-SK, 1000-SK, 1200-SK, 1750-SK



Wood Chips - Maple [Part #WC-37748]

PRODUCT DIMENSIONS
2.5 cu.ft.

SMOKER MODELS
767-SK, 1000-SK/I, 1000-SK/II, 1767-SK,
750-SK, 1000-SK, 1200-SK, 1750-SK



Wood Chips - Hickory [Part #WC-37749]

PRODUCT DIMENSIONS
2.5 cu.ft.

SMOKER MODELS
767-SK, 1000-SK/I, 1000-SK/II, 1767-SK,
750-SK, 1000-SK, 1200-SK, 1750-SK

Smoker Chip Trays [For Smoker Ovens Only]



Classic Unit Chip Tray [Part #4652]

PRODUCT DIMENSIONS
9.752" x 4.312" x 2.654"

CLASSIC SMOKER MODELS
767-SK, 1767-SK, 1000-SK/I, 1000-SK/II



New Unit Chip Tray [Part #5030981]

PRODUCT DIMENSIONS
10.454" x 4.374" x 2.654"

NEW SMOKER MODELS
750-SK, 1750-SK, 1000-SK, 1200-SK

Multi-Cook Oven Accessories

Delivering an unmatched volume and variety of food, With exclusive Structured Air Technology® offer up to four ovens in one—each chamber with independent temperature, fan speed and cook time controls. This individual chamber design allows for simultaneous, high-quality cooking with zero flavor transfer between chambers. Achieve ultimate menu variety and set your foodservice operation up for success with an assortment of accessories for cooking, cleaning and more.



Pizza Screens

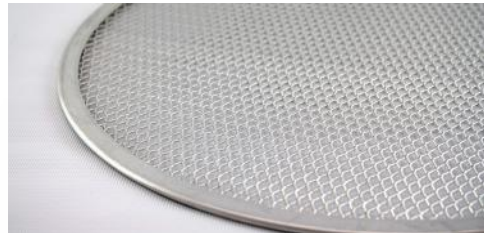
Pizza screens guarantee that pizza is cooked to perfection, with a crispy crust and all, every time.



Pan, Pizza Screen 14"
[Part #PR-47175]

PRODUCT DIMENSIONS
14" [355mm]

MODELS
CMC-H2H, CMC-H3H, VMC-H2, VMC-H2H,
VMC-H3, VMC-H3H, VMC-H4, VMC-H4H,
VMC-F3, VMC-F4



Pan, Pizza Screen 16"
[Part #PR-47176]

PRODUCT DIMENSIONS
16" [406mm]

MODELS
VMC-F3, VMC-F4, VMC-H2HW,
VMC-H3HW

Probes [Available in Vector F and Converge only]

Ensure accurate cooking temperatures and capture HACCP data with a variety of probes designed to be easily inserted and removed from ovens.



Probe
[Part #PR-35770]

PRODUCT DIMENSIONS
1000 mm

MODELS
VMC-F3, VMC-F4



Probe
[Part #PR-35487]

PRODUCT DIMENSIONS
1600 mm

MODELS
VMC-F3, VMC-F4



Probe
[Part #PR-36201]

PRODUCT DIMENSIONS
820 mm

MODELS
VMC-F3, VMC-F4



Probe
[Part #PR-47968]

PRODUCT DIMENSIONS
460 mm

MODELS
CMC-H2H, CMC-H3H

Shelves

Make the most of your oven with a variety of shelves designed to optimize oven space and effortlessly execute every dish.



Wire shelf, Half-Size Sheet Pan
[Part #SH-37662]

PRODUCT DIMENSIONS
18-1/2" x 14-3/4" x 1"
[470 x 374 x 25]

MODELS
VMC-H2, VMC-H3, VMC-H4



Wire Shelf, Hotel Pan
[Part #SH-39077]

PRODUCT DIMENSIONS
20-1/2" x 14-3/4" x 1"
[520 x 374 x 25]

MODELS
VMC-H2H, VMC-H3H, VMC-H4H



Cooking Grate, Hotel Pan
[Part #SH-39078]

PRODUCT DIMENSIONS
9 3/4" x 17-15/16"
[247 x 431]

MODELS
VMC-H2H, VMC-H3H, VMC-H4H



Cooking Grate, Half Pan
[Part #SH-39087]

PRODUCT DIMENSIONS
11 3/4" x 16-1/2"
[298 x 419]

MODELS
VMC-H2, VMC-H3, VMC-H4



Wire Rack
[Part #SH-39201]

PRODUCT DIMENSIONS
20-5/8" x 26-3/4" x 1"
[524 x 679 x 24]

MODELS
VMC-F3, VMC-F4



Wire Rack
[Part #SH-46478]

PRODUCT DIMENSIONS
16.75" x 20.5" x .75"
[425 x 521 x 19]

MODELS
VMC-H2HW, VMC-H3HW

Cleaning

Protect your investment with regular cleaning. From sprays to tablets to brushes, we have what you need to properly care for your equipment, ensure high-quality cooking results, keep employees safe and extend equipment lifetime.



Non-Caustic Oven Cleaner [Part #CE-46828]

PRODUCT DIMENSIONS
Refer to Liquid Spec Sheet

MODELS
VMC-H2, VMC-H2H, VMC-H3, VMC-H3H,
VMC-H4, VMC-H4H, VMC-F3, VMC-F4,
VMC-H2HW, VMC-H3HW



Non-Caustic Oven Cleaner [case of six 6] [Part #CE-46829]

PRODUCT DIMENSIONS
Refer to Liquid Spec Sheet

MODELS
VMC-H2, VMC-H2H, VMC-H3, VMC-H3H,
VMC-H4, VMC-H4H, VMC-F3, VMC-F4,
VMC-H2HW, VMC-H3HW



Non-Caustic Oven Cleaner [Part #CE-47853]

PRODUCT DIMENSIONS
Refer to Liquid Spec Sheet

MODELS
CMC-H2H, CMC-H3H



Oven Descaler [Part #CE-47859]

PRODUCT DIMENSIONS
Refer to Liquid Spec Sheet

MODELS
CMC-H2H, CMC-H3H

Cooking Accessories

Seamlessly execute your menu and introduce new menu items with a variety of cooking accessories. We offer a number of pans, racks, probes and more to help you achieve the menu versatility your customers are looking for.

Filters



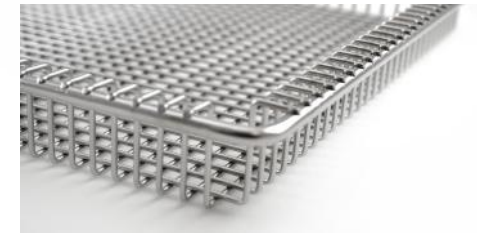
Kit, Filters, Internal Cavity [Order 1 Per Cavity] [Kit Part #5027119]

PRODUCT DIMENSIONS
Side 15" x 3" x 1-5/8" [379 x 90 x 42]
Back 13-1/2" x 3-1/2" x 1-5/8"
[343 x 89 x 42]

MODELS
VMC-H2, VMC-H2H, VMC-H3,
VMC-H3H, VMC-H4, VMC-H4H,
VMC-H3HW, VMC-H2HW

Baskets

Add crispy, fried food to your menu without the traditional, oil-heavy deep fryer with our oven fry baskets.



Fry Basket [Part #BS-26730]

PRODUCT DIMENSIONS
12-3/4" x 20-7/8" x 1-5/8"
[324 x 529 x 42]

MODELS
CMC-H2H, CMC-H3H, VMC-H3H, VMC-H4H



Fry Basket [Part #BS-46316]

PRODUCT DIMENSIONS
12-3/4" x 18" x 1-5/8"
[324 x 457 x 42]

MODELS
CMC-H2H, CMC-H3H, VMC-H2,
VMC-H2H, VMC-H3, VMC-H3H,
VMC-H4, VMC-H4H





Grill Pans and Accessories

Introduce grilled flavors to your menu—adding grill marks to any dish—without the need for traditional, labor-intensive grilling.



Grill Pan, Half Size [Part #PN-39135]

PRODUCT DIMENSIONS
11" x 16"
[276 x 406]

MODELS
CMC-H2H, CMC-H3H, VMC-H2, VMC-H2H, VMC-H3, VMC-H3H, VMC-H4, VMC-H4H, VMC-F3, VMC-F4



Grill Pan, Full Size [Part #PN-39474]

PRODUCT DIMENSIONS
18" x 26"
[448 x 660]

MODELS
VMC-F3, VMC-F4



Pan, 5" indent Bread Form [Part #PN-47326]

PRODUCT DIMENSIONS
17-3/4" x 13-3/16" x 1-3/16"
[450 x 335 x 30mm]

MODELS
CMC-H2H, CMC-H3H, VMC-H2, VMC-H2H, VMC-H3, VMC-H3H, VMC-H4, VMC-



Half Sheet Egg Pan [9 Count] [Part #PN-47178]

PRODUCT DIMENSIONS
18" x 13"
[457 x 330mm]

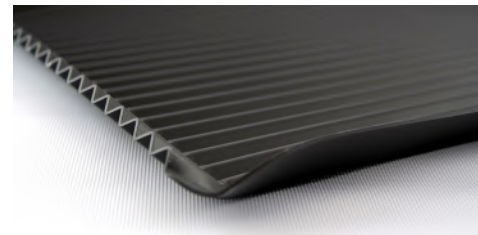
MODELS
CMC-H2H, CMC-H3H, VMC-H2, VMC-H2H, VMC-H3, VMC-H3H, VMC-H4, VMC-H4H, VMC-F3, VMC-F4



Egg Pan [6 Count] [Part #PN-47177]

PRODUCT DIMENSIONS
18" x 11-1/4"
[457 x 285mm]

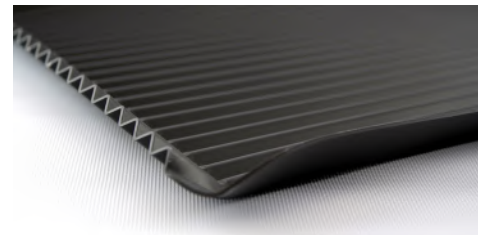
MODELS
CMC-H2H, CMC-H3H, VMC-H2, VMC-H2H, VMC-H3, VMC-H3H, VMC-H4, VMC-H4H, VMC-F3, VMC-F4



CORRUGATED GRILL PAN GN1/1 [Part #PN-47172]

PRODUCT DIMENSIONS
12-3/4" x 21"
[323 x 533mm]

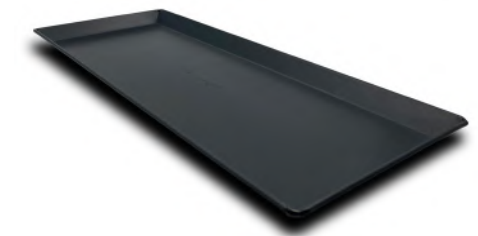
MODELS
CMC-H2H, CMC-H3H, VMC-H2H, VMC-H3H, VMC-H4H, VMC-F3, VMC-F4



CORRUGATED GRILL PAN 13"x18" [Part #PN-47173]

PRODUCT DIMENSIONS
13" x 18"
[330 x 457mm]

MODELS
CMC-H2H, CMC-H3H, VMC-H2, VMC-H2H, VMC-H3, VMC-H3H, VMC-H4, VMC-H4H, VMC-F3, VMC-F4



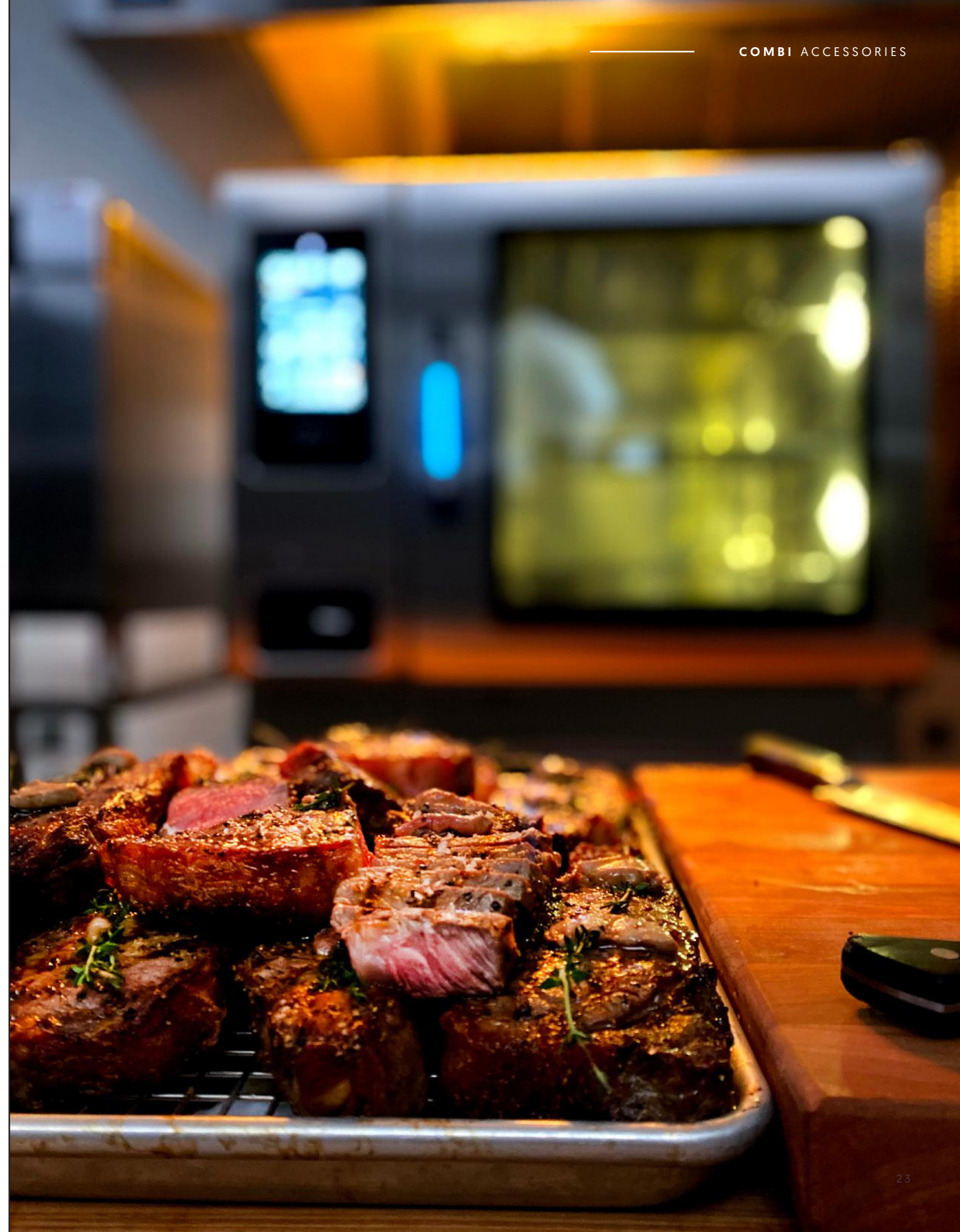
FLATBREAD PAN 5"x15" [Part #PN-48094]

PRODUCT DIMENSIONS
5" x 15"
[127 x 381mm]

MODELS
CMC-H2H, CMC-H3H, VMC-H2, VMC-H2H, VMC-H3, VMC-H3H, VMC-H4, VMC-H4H, VMC-H2HW, VMC-H3HW, VMC-F3, VMC-F4

Combi Oven Accessories

Combining multiple cooking functions into a single appliance, Combination ovens from Alto-Shaam keep up with kitchen demand by providing efficient and consistent food production. An indispensable centerpiece of the kitchen, these ovens do the work of a convection oven, grill, steamer, fryer, smoker and more. Make the most of your oven investment and meet the needs of your foodservice operation and your customers—with a variety of accessories. From pans to cleaning supplies to stacking kits, stands and more, we've got you covered.



Cleaning

Protect your investment with regular cleaning. From sprays to tablets to brushes, we have what you need to properly care for your equipment, ensure high-quality cooking results, keep employees safe and extend equipment lifetime.



Scale Free [Part #CE-27889]

PRODUCT DIMENSIONS
4 lb. (1.8 kg) bottle

COMBI MODELS
CTX4-10, CTP6-10, CTP10-10, CTP20-10, CTP7-20, CTP10-20,
CTP20-20, PRODIGI 6-10, PRODIGI 7-20, PRODIGI 10-10,
PRODIGI 10-20, PRODIGI 20-20, PRODIGI 20-10



Combiclean Combitabs [Part #CE-28892]

PRODUCT DIMENSIONS
90 tablets per bucket

COMBI MODELS
CTX4-10



Combiclean Combitabs [Part #CE-46991]

PRODUCT DIMENSIONS
50 tablets per bucket

COMBI MODELS
CTP6-10, CTP10-10, CTP20-10, CTP7-20, CTP10-20, CTP20-20,
PRODIGI 6-10, PRODIGI 7-20, PRODIGI 10-10, PRODIGI 10-20,
PRODIGI 20-20, PRODIGI 20-10



Combitherm Cleaning Liquid [Part #CE-24750]

PRODUCT DIMENSIONS
2.5 gallon jug

COMBI MODELS
CTX4-10, CTP6-10, CTP10-10, CTP20-10, CTP7-20, CTP10-20,
CTP20-20, PRODIGI 6-10, PRODIGI 7-20, PRODIGI 10-10,
PRODIGI 10-20, PRODIGI 20-20, PRODIGI 20-10



Liquid Cleaner [Part #CE-46869]

PRODUCT DIMENSIONS
Refer to Liquid Spec Sheet

COMBI MODELS
CTP6-10, CTP10-10, CTP20-10, CTP7-20, CTP10-20, CTP20-20,
PRODIGI 6-10, PRODIGI 7-20, PRODIGI 10-10, PRODIGI 10-20,
PRODIGI 20-20, PRODIGI 20-10



Brush, Tray Clean-Out [Qty 6 brushes] [Part #BH-38059]

PRODUCT DIMENSIONS
60" x 1/2" (1524 x 13)

COMBI MODELS
CTX4-10, CTP6-10, CTP10-10, CTP20-10, CTP7-20, CTP10-20,
CTP20-20, PRODIGI 6-10, PRODIGI 7-20, PRODIGI 10-10,
PRODIGI 10-20, PRODIGI 20-20, PRODIGI 20-10



Hand Scraper [Part #SC-47403]

PRODUCT DIMENSIONS
8"

COMBI MODELS
CTX4-10, CTP6-10, CTP10-10, CTP20-10, CTP7-20, CTP10-20,
CTP20-20, PRODIGI 6-10, PRODIGI 7-20, PRODIGI 10-10,
PRODIGI 10-20, PRODIGI 20-20, PRODIGI 20-10

Cooking Accessories

Seamlessly execute your menu and introduce new menu items with a variety of cooking accessories. We offer a number of pans, racks, probes and more to help you achieve the menu versatility your customers are looking for.

Pans

Pans are available in a variety of sizes and configurations to collect grease and drippings during the cooking process.



Grease Collection Pan [Part #4758]

PRODUCT DIMENSIONS
19-3/4" x 25-1/2" x 1-1/2"
(501 x 650 x 38)

COMBI MODELS
CTP7-20, CTP10-20, PRODIGI 7-20,
PRODIGI 10-20



Drip Pan without Drain [Part #5003463]

PRODUCT DIMENSIONS
12-3/4" x 21-1/4" x 1-1/2"
(323 x 540 x 38)

COMBI MODELS
CTP6-10, CTP10-10, CTP20-10, PRODIGI 6-10,
PRODIGI 10-10, PRODIGI 20-10



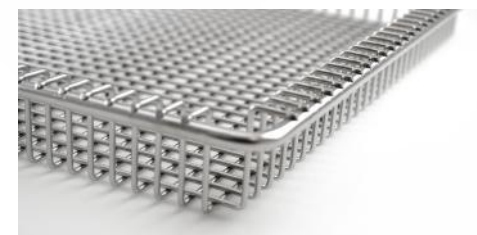
Grease Collection Pan [Part #14475]

PRODUCT DIMENSIONS
21" x 27-1/8" x 2-3/4"
(530 x 688 x 70)

COMBI MODELS
CTP6-10, CTP10-10, CTP20-10, PRODIGI 6-10,
PRODIGI 10-10, PRODIGI 20-10

Baskets

Add crispy, fried food to your menu without the traditional, oil-heavy deep fryer with our oven fry baskets.



Fry Basket [Part #BS-26730]

PRODUCT DIMENSIONS
12-3/4" x 20-7/8" x 1-5/8"
(324 x 529 x 12)

COMBI MODELS
CTX4-10, CTP6-10, CTP10-10, CTP20-10, CTP7-20,
CTP10-20, PRODIGI 6-10, PRODIGI 7-20,
PRODIGI 10-10, PRODIGI 10-20, PRODIGI 20-10

Shelves

Make the most of your oven with a variety of shelves designed to optimize oven space and effortlessly execute every dish.



Shelf, Stainless Steel Wire [Part #SH-22584]

PRODUCT DIMENSIONS
20-7/8" x 25-1/8"
[529 x 638]

COMBI MODELS
CTP7-20, CTP10-20, CTP20-20, PRODIGI 7-20,
PRODIGI 10-20, PRODIGI 20-20



Shelf, Stainless Steel Wire [Part #SH-2903]

PRODUCT DIMENSIONS
12-3/4" x 20-7/8"
[324 x 529]

COMBI MODELS
CTP6-10, CTP10-10, CTP20-10, PRODIGI 6-10,
PRODIGI 10-10, PRODIGI 20-10

Pizza Screens

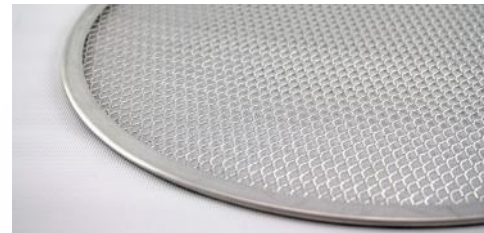
Pizza screens guarantee that pizza is cooked to perfection, with a crispy crust and all, every time.



Pan, Pizza Screen 14" [Part #PR-47175]

PRODUCT DIMENSIONS
14" [355mm]

COMBI MODELS
CTX4-10, CTP6-10, CTP10-10, CTP20-10, CTP7-20,
CTP10-20, CTP20-20, PRODIGI 6-10, PRODIGI 7-20,
PRODIGI 10-10, PRODIGI 10-20, PRODIGI 20-20,
PRODIGI 20-10



Pan, Pizza Screen 16" [Part #PR-47176]

PRODUCT DIMENSIONS
16" [406mm]

COMBI MODELS
CTP6-10, CTP10-10, CTP20-10, CTP7-20, CTP10-20,
CTP20-20, PRODIGI 6-10, PRODIGI 7-20, PRODIGI
10-10, PRODIGI 10-20, PRODIGI 20-20, PRODIGI 20-10

Grill Pans and Accessories

Introduce grilled flavors to your menu—adding grill marks to any dish—without the need for labor-intensive grilling.



Grill Pan, Half Size [Part #PN-39135]

PRODUCT DIMENSIONS
10-7/8" x 16" [276 x 406]

COMBI MODELS
CTP6-10, CTP10-10, CTP20-10, CTP7-20, CTP10-20,
PRODIGI 6-10, PRODIGI 7-20, PRODIGI 10-10,
PRODIGI 10-20, PRODIGI 20-10

Grill Pans and Accessories (Continued)



Grilling Grate [Part #SH-26731]

PRODUCT DIMENSIONS
12-3/4" x 20-7/8"
[325 x 530]

COMBI MODELS
CTX4-10, CTP6-10, CTP10-10, CTP20-10, CTP7-20,
CTP10-20, PRODIGI 6-10, PRODIGI 7-20, PRODIGI
10-10, PRODIGI 10-20, PRODIGI 20-10



Wire Rope Hook Assembly, Grill Grate Retention [Part #5029725]

PRODUCT DIMENSIONS
11-1/4" [286]

COMBI MODELS
CTP6-10, CTP10-10, CTP20-10, CTP7-20, CTP10-
20, PRODIGI 6-10, PRODIGI 7-20, PRODIGI 10-10,
PRODIGI 10-20, PRODIGI 20-10



Pan, 5" indent Bread Form [Part #PN-47326]

PRODUCT DIMENSIONS
17-3/4" x 13-3/16" x 1-3/16"
[450 x 335 x 30mm]

COMBI MODELS
CTX4-10, CTP6-10, CTP10-10, CTP20-10, CTP7-20,
CTP10-20, CTP20-20, PRODIGI 6-10, PRODIGI 7-20,
PRODIGI 10-10, PRODIGI 10-20, PRODIGI 20-10,
PRODIGI 20-20



Half Sheet Egg Pan (9 Count) [Part #PN-47178]

PRODUCT DIMENSIONS
18" x 13"
[457 x 330mm]

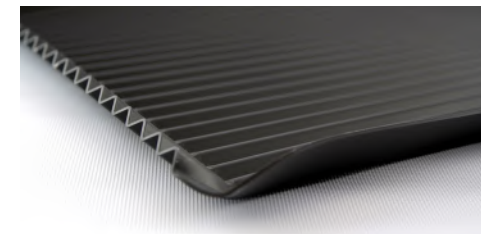
COMBI MODELS
CTX4-10, CTP6-10, CTP10-10, CTP20-10, CTP7-20,
CTP10-20, CTP20-20, PRODIGI 6-10, PRODIGI 7-20,
PRODIGI 10-10, PRODIGI 10-20, PRODIGI 20-10,
PRODIGI 20-20



Egg Pan (6 Count) [Part #PN-47177]

PRODUCT DIMENSIONS
18" x 11-1/4"
[457 x 285mm]

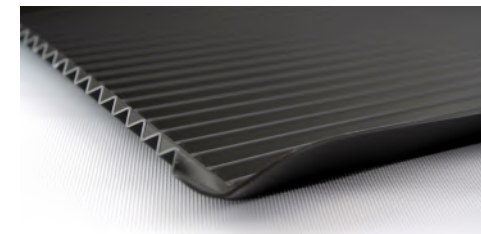
COMBI MODELS
CTX4-10, CTP6-10, CTP10-10, CTP20-10, CTP7-20,
CTP10-20, CTP20-20, PRODIGI 6-10, PRODIGI 7-20,
PRODIGI 10-10, PRODIGI 10-20, PRODIGI 20-10,
PRODIGI 20-20



CORRUGATED GRILL PAN GN1/1 [Part #PN-47172]

PRODUCT DIMENSIONS
12-3/4" x 21"
[323 x 533mm]

COMBI MODELS
CTX4-10, CTP6-10, CTP10-10, CTP20-10, CTP7-20,
CTP10-20, CTP20-20, PRODIGI 6-10, PRODIGI 7-20,
PRODIGI 10-10, PRODIGI 10-20, PRODIGI 20-10,
PRODIGI 20-20



CORRUGATED GRILL PAN 13"x18" [Part #PN-47173]

PRODUCT DIMENSIONS
13" x 18"
[330 x 457mm]

COMBI MODELS
CTX4-10, CTP6-10, CTP10-10, CTP20-10, CTP7-20,
CTP10-20, CTP20-20, PRODIGI 6-10, PRODIGI 7-20,
PRODIGI 10-10, PRODIGI 10-20, PRODIGI 20-10,
PRODIGI 20-20

Probes

Ensure accurate cooking temperatures and capture HACCP data with a variety of probes designed to be easily inserted and removed from ovens.



Single Point Probe
[Part #5014297R]

PRODUCT DIMENSIONS
1300 mm

COMBI MODELS
CTX4-10



Probe
[Part #PR-35770]

PRODUCT DIMENSIONS
1000 mm

COMBI MODELS
CTX4-10, CTP6-10, CTPI0-10, CTP20-10, CTP7-20, CTPI0-20, PRODIGI 6-10, PRODIGI 7-20, PRODIGI 10-10, PRODIGI 10-20, PRODIGI 20-10



Probe, Sous Vide
[Part #PR-36576]

PRODUCT DIMENSIONS
1000 mm

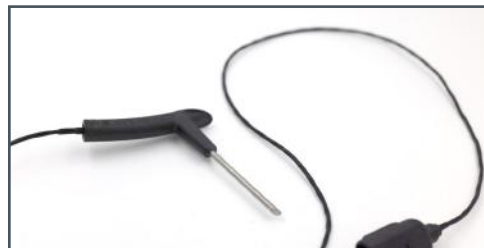
COMBI MODELS
CTX4-10, CTP6-10, CTPI0-10, CTP20-10, CTP7-20, CTPI0-20, PRODIGI 6-10, PRODIGI 7-20, PRODIGI 10-10, PRODIGI 10-20, PRODIGI 20-10



Probe, T shaped
[Part #PR-37158]

PRODUCT DIMENSIONS
820 mm

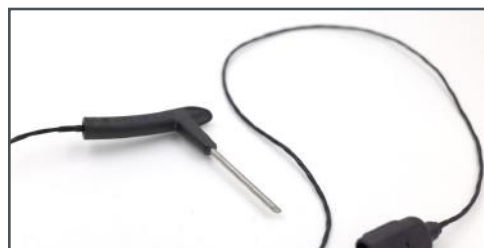
COMBI MODELS
CTP6-10, CTP7-20, PRODIGI 6-10, PRODIGI 7-20,



Probe
[Part #PR-37157]

PRODUCT DIMENSIONS
1000 mm

COMBI MODELS
CTPI0-10, CTP10-20, PRODIGI 10-10, PRODIGI 10-20



Probe
[Part #PR-37156]

PRODUCT DIMENSIONS
1600 mm

COMBI MODELS
CTP 20-10, CTP20-20, PRODIGI 20-10, PRODIGI 20-20



Protein Racks

Effortlessly roast proteins with racks for poultry, ribs and more available in a number of sizes and configurations.



6-piece Poultry Roasting Rack
[Part #5014438]

PRODUCT DIMENSIONS
12-3/4" x 21" x 6-1/4"
[322 x 533 x 158]

COMBI MODELS
CTP6-10, CTPI0-10, CTP20-10, CTP7-20, CTPI0-20, PRODIGI 6-10, PRODIGI 7-20, PRODIGI 10-10, PRODIGI 10-20, PRODIGI 20-10



6-piece Poultry Roasting Rack with drip guard
[Part #PN-5020829]

PRODUCT DIMENSIONS
12-3/4" x 21" x 6-3/8"
[323 x 533 x 162]

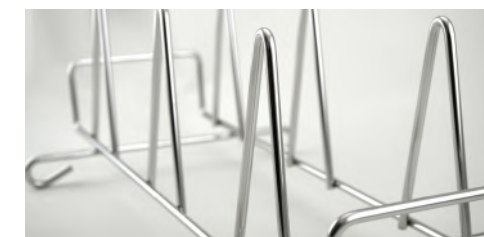
COMBI MODELS
CTP6-10, CTPI0-10, CTP20-10, CTP7-20, CTPI0-20, PRODIGI 6-10, PRODIGI 7-20, PRODIGI 10-10, PRODIGI 10-20, PRODIGI 20-10



10-piece Poultry Roasting Rack
[Part #SH-22634]

PRODUCT DIMENSIONS
12-1/2" x 20-7/8" x 5-1/8"
[317 x 529 x 131]

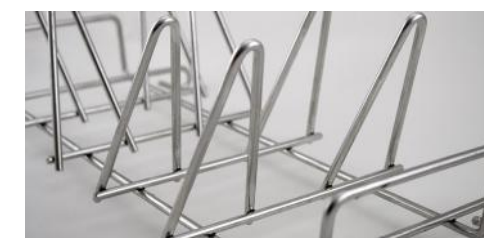
COMBI MODELS
CTP20-10, CTP7-20, CTPI0-20, PRODIGI 7-20, PRODIGI 10-20, PRODIGI 20-10



6-piece Poultry Roasting Rack
[Part #SH-23000]

PRODUCT DIMENSIONS
10-1/4" x 19-1/4" x 7"
[260 x 488 x 177]

COMBI MODELS
CTX4-10, CTP6-10, CTPI0-10, CTP20-10, CTP7-20, CTPI0-20, PRODIGI 6-10, PRODIGI 7-20, PRODIGI 10-10, PRODIGI 10-20, PRODIGI 20-10



8-piece Poultry Roasting Rack
[Part #SH-23619]

PRODUCT DIMENSIONS
10-1/2" x 19-1/2" x 6"
[266 x 495 x 152]

COMBI MODELS
CTP6-10, CTPI0-10, CTP20-10, CTP7-20, CTPI0-20, PRODIGI 6-10, PRODIGI 7-20, PRODIGI 10-10, PRODIGI 10-20, PRODIGI 20-10

Wood Chips

Introduce bold flavor to your menu with real smoke from real wood chips available in a variety of flavors and package sizes.



Wood Chips - Cherry [Part #WC-22541]

PRODUCT DIMENSIONS
1.25 cu.ft.

COMBI MODELS

CTX4-10, CTP6-10, CTP10-10, CTP20-10, CTP7-20, CTP10-20,
PRODIGI 6-10, PRODIGI 7-20, PRODIGI 10-10, PRODIGI 10-20,
PRODIGI 20-10



Wood Chips - Apple [Part #WC-22543]

PRODUCT DIMENSIONS
1.25 cu.ft.

COMBI MODELS

CTX4-10, CTP6-10, CTP10-10, CTP20-10, CTP7-20, CTP10-20,
PRODIGI 6-10, PRODIGI 7-20, PRODIGI 10-10, PRODIGI 10-20,
PRODIGI 20-10



Wood Chips - Maple [Part #WC-22545]

PRODUCT DIMENSIONS
1.25 cu.ft.

COMBI MODELS

CTX4-10, CTP6-10, CTP10-10, CTP20-10, CTP7-20, CTP10-20,
PRODIGI 6-10, PRODIGI 7-20, PRODIGI 10-10, PRODIGI 10-20,
PRODIGI 20-10



Wood Chips - Hickory [Part #WC-2829]

PRODUCT DIMENSIONS
1.25 cu.ft.

COMBI MODELS

CTX4-10, CTP6-10, CTP10-10, CTP20-10, CTP7-20, CTP10-20,
PRODIGI 6-10, PRODIGI 7-20, PRODIGI 10-10, PRODIGI 10-20,
PRODIGI 20-10



Wood Chips - Cherry. [Part #WC-37746]

PRODUCT DIMENSIONS
2.5 cu.ft.

COMBI MODELS

CTX4-10, CTP6-10, CTP10-10, CTP20-10, CTP7-20, CTP10-20,
PRODIGI 6-10, PRODIGI 7-20, PRODIGI 10-10, PRODIGI 10-20,
PRODIGI 20-10



Wood Chips - Apple [Part #WC-37747]

PRODUCT DIMENSIONS
2.5 cu.ft.

COMBI MODELS

CTX4-10, CTP6-10, CTP10-10, CTP20-10, CTP7-20, CTP10-20,
PRODIGI 6-10, PRODIGI 7-20, PRODIGI 10-10, PRODIGI 10-20,
PRODIGI 20-10



Wood Chips, Sugar Maple [Part #WC-37748]

PRODUCT DIMENSIONS
2.5 cu.ft.

COMBI MODELS

CTX4-10, CTP6-10, CTP10-10, CTP20-10, CTP7-20,
CTP10-20, PRODIGI 6-10, PRODIGI 7-20, PRODIGI 10-10,
PRODIGI 10-20, PRODIGI 20-10



Wood Chips, Hickory [Part #WC-37749]

PRODUCT DIMENSIONS
2.5 cu.ft.

COMBI MODELS

CTX4-10, CTP6-10, CTP10-10, CTP20-10, CTP7-20,
CTP10-20, PRODIGI 6-10, PRODIGI 7-20, PRODIGI 10-10,
PRODIGI 10-20, PRODIGI 20-10



Grease Filters

Comply with standard codes and local jurisdictions with the addition grease filters. We offer a number of filters designed to eliminate harmful, grease-laden air from reentering the kitchen.



Filter, CT, Grease [Part #FI-46995]

PRODUCT DIMENSIONS
10" x 20" x 2" [244 x 508 x 50]

COMBI MODELS
CTP7-20, CTP10-20, PRODIGI 10-20,
PRODIGI 7-20



Filter, CT, Grease [Part #FI-46994]

PRODUCT DIMENSIONS
10" x 16" x 2" [244 x 406 x 50]

COMBI MODELS
CTP6-10, CTP10-10, PRODIGI 6-10,
PRODIGI 10-10



Filter, UI Class 1 Fire Rating [Part #FI-36620]

PRODUCT DIMENSIONS
8.25" x 20" x 2" [209 x 508 x 50]

COMBI MODELS
CTP7-20, CTP10-20, PRODIGI 7-20,
PRODIGI 10-20



Filter, UI Class 1 Fire Rating [Part #FI-24114]

PRODUCT DIMENSIONS
8.5" x 16" x 2" [215 x 406 x 50]

COMBI MODELS
CTP6-10, CTP10-10, PRODIGI 6-10,
PRODIGI 10-10

Miscellaneous Hardware

Optimize your kitchen layout and streamline processes with a variety of stands and miscellaneous hardware. From grease collection carts and containers to equipment stands, we help ensure your foodservice operation is set up for success.



Poultry Grease Container [Part #5014846]

PRODUCT DIMENSIONS
10" x 16" x 2"
[244 x 396 x 50]

COMBI MODELS
CTP6-10, CTP10-10, CTP20-10, CTP7-20, CTP10-20,
CTP20-20, PRODIGI 6-10, PRODIGI 7-20, PRODIGI 10-10,
PRODIGI 10-20, PRODIGI 20-20, PRODIGI 20-10



Gas Line Quick Disconnect [Part #CR-33543]

PRODUCT DIMENSIONS
3/4" x 66-1/4"
[19 x 1682]

COMBI MODELS
CTP6-10, CTP10-10, CTP20-10, CTP7-20, CTP10-20,
CTP20-20, PRODIGI 6-10, PRODIGI 7-20, PRODIGI 10-10,
PRODIGI 10-20, PRODIGI 20-20, PRODIGI 20-10

Water Treatment

Protect your Combitherm oven investment and extend equipment lifetime with a reverse osmosis system. Proper water treatment helps eliminate labor and costs associated with frequent oven maintenance due to scale build up and corrosion of equipment.



Pentair Everpure 175 CR/5 [Part #5031203]

PRODUCT DIMENSIONS
20"h x 18.3"w x 6"d

COMBI MODELS
CTX4-10, CTP6-10, CTP10-10, CTP7-20, PRODIGI 6-10,
PRODIGI 7-20, PRODIGI 10-10



Pentair Everpure 175 CR/10 [Part #5031204]

PRODUCT DIMENSIONS
20"h x 18.3"w x 6"d

COMBI MODELS
CTP10-20, CTP20-10, CTP20-20, PRODIGI 10-20,
PRODIGI 20-20, PRODIGI 20-10



Pentair Everpure 175 CR/16 [Part #5031205]

PRODUCT DIMENSIONS
20"h x 18.3"w x 6"d

COMBI MODELS
CTP10-20, CTP20-10, CTP20-20, PRODIGI 10-20,
PRODIGI 20-20, PRODIGI 20-20



Pentair Everpure 175 CR/5 (For Stacked Application) [Part #5031206]

PRODUCT DIMENSIONS
20"h x 18.3"w x 6"d

COMBI MODELS
CTX4-10 over CTX4-10



Pentair Everpure 175 CR/10 (For Stacked Application) [Part #5031207]

PRODUCT DIMENSIONS
20"h x 18.3"w x 6"d

COMBI MODELS
CTX4-10 over CTX4-10, CTP6-10 over CTP7-20,
CTP6-10 over CTP10-10, CTP7-20 over CTP7-20,
PRODIGI 6-10 over PRODIGI 7-20, PRODIGI 6-10 over
PRODIGI 10-10, PRODIGI 7-20 over PRODIGI 7-20,



Pentair Everpure 175 CR/16 (For Stacked Application) [Part #5031208]

PRODUCT DIMENSIONS
20"h x 18.3"w x 6"d

COMBI MODELS
CTP6-10 over CTP6-10, CTP7-20 over CTP7-20
CTP6-10 over CTP7-20, CTP6-10 over CTP10-10,
PRODIGI 7-20 over PRODIGI 7-20, PRODIGI 6-10 over
PRODIGI 7-20, PRODIGI 6-10 over PRODIGI 6-10



Pentair Everpure Replacement Cartridge 10" [Part #FI-46937]

PRODUCT DIMENSIONS
12.85"h x 3.9"w x 3.9"d

COMBI MODELS
All Models



Pentair ILMA-10.14 Replacement Cartridge 10" [Part #FI-46939]

PRODUCT DIMENSIONS
10"h x 3.9"w x 3.9"d

COMBI MODELS
All Models



Pentair QT Replacement Cartridge 10" [Part #FI-46940]

PRODUCT DIMENSIONS
12.75"h x 4"w x 4"d

COMBI MODELS
All Models



Pentair Everpure AMS-QT15 Membrane Replacement Cartridge [Part #FI-46938]

PRODUCT DIMENSIONS
12.75"h x 4"w x 4"d

COMBI MODELS
All Models

A partner **you can rely on.**

At Alto-Shaam we're relentlessly driven to design and manufacture products that perform flawlessly in the most demanding conditions to give operators confidence and consistency in every meal. And our team is just as committed to providing industry-leading service and support. From installation consultation to equipment training to around the clock, every day technical assistance to culinary support—you can trust that we are here for you.



Full Line of Commercial Kitchen Equipment:

- Combination Ovens
- Cook & Hold Ovens
- Food Wells
- Heated Holding
- Smokers
- Quickchillers™
- Rotisseries
- Carving Stations
- Merchandisers & Display Cases
- Multi-Cook Ovens



ALTO-SHAAM®